

The new 10A Pug Mixer – High-intensity continuous mixing for testing and small production lines.



The 10A Pug Mixer delivers high-intensity continuous mixing for reliable low-tonnage and small footprint requirements. We sized this machine to match the volumetric displacement of our HD10 extruder, mixing up to five tons per hour.

The 10APM can be installed above the HD-10 and also functions as a stand-alone mixing machine. This is our recommendation for maximum pugging – in a smaller machine than our 25A Pug Sealer.

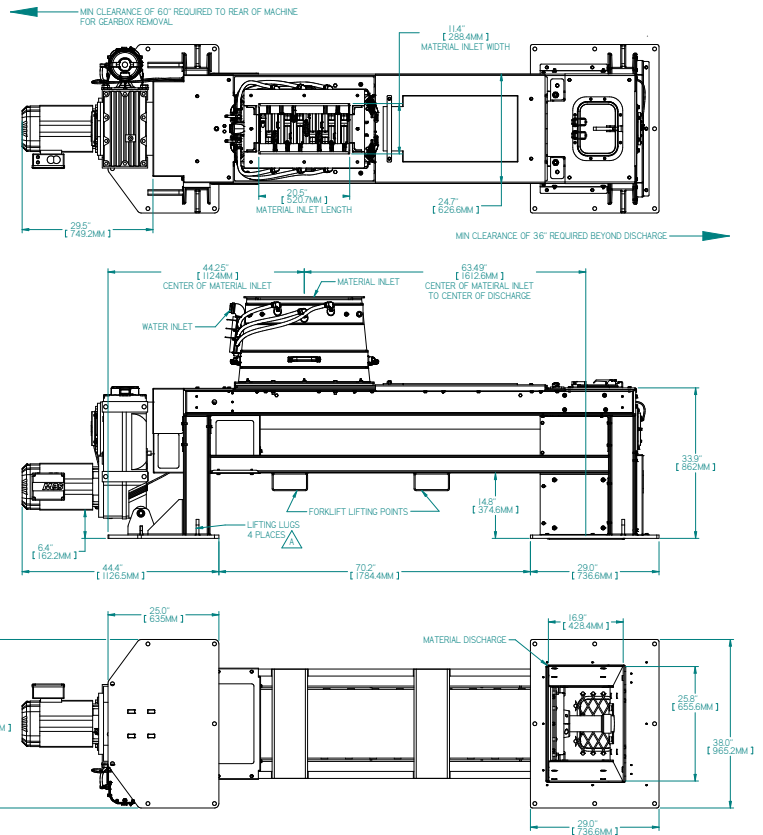
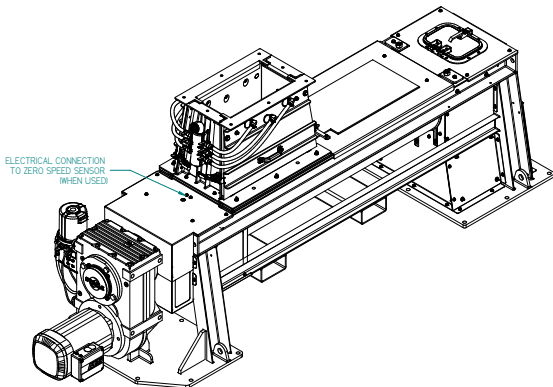
- High-efficiency mixing
- Removable pug tub cover for visibility
- Easy shaft and tub removal
- Easy knife installation and removal
- Easy access water shroud
- Fully UHMW-lined discharge minimizes buildup
- Visibility at discharge
- Modular auto-greasing system
- Shaft-mounted motor for easy removal

To discuss your requirements, contact your regional Steele sales representative or call the Steele offices at +1.704.872.3681.

Engineered for easier operation, cleaning and maintenance

We drew on the company's unique experience with mixing and shaping bulk raw materials to design the 10APM. As always, operator and maintenance input influenced the machine's development.

The 10APM eliminates stoppages from using a larger mixer and over-running the extruder. It keeps work flow on track and minimizes downtime with reliable operation and simple maintenance requirements.



For more on our engineering and machines for testing or small production lines, talk to your regional Steele representative or call +1.704.872.3681.